

Stoneland Cottages

Litton, Yorkshire Dales

STONELANDS FARMYARD COTTAGES, LITTON, NEAR SKIPTON, BD23 5QH

Grassington – 10 miles
Settle – 13 miles
Skipton – 17 miles
Harrogate – 32 miles

- WEBSITE – www.stonelandscottages.co.uk
- 5 WELL APPOINTED HOLIDAY COTTAGES ARRANGED AROUND A CENTRAL COURTYARD – ONE OF WHICH WILL NEED TO BE UTILISED AS OWNERS/MANAGERS ACCOMMODATION
- 3 INDIVIDUAL APARTMENTS
- SUPERB INDOOR SWIMMING POOL WITH SAUNA AND CHANGING FACILITIES
- EXCELLENT OUTDOOR PLAY PARK AND FOOTBALL PITCH
- EXTENSIVE PARKING AREA
- BEAUTIFUL SURROUNDING COUNTRYSIDE
- APPROXIMATE SITE AREA 6¼ ACRES (2.5 HA)

A SUPERB, WELL ESTABLISHED AND PROFITABLE HOLIDAY LETTING BUSINESS INCLUDING 5 COTTAGES AND 3 APARTMENTS TOGETHER WITH AN IMPRESSIVE INDOOR SWIMMING POOL COMPLEX, LOCATED IN THE BEAUTIFUL LITTONDALE VALLEY, ONE OF THE PRETTIEST AND UNSPOILT AREAS WITHIN THE YORKSHIRE DALES NATIONAL PARK.





LOCATION

Stonelands Farmyard Cottages are situated about ½ a mile to the south east of the village. Litton is a small Dales village with a public house. There is another public house called The Falcon Inn in the neighbouring village of Arncliffe. A more extensive range of everyday facilities are available in Grassington and the market towns of Skipton and Settle.

Local attractions in the area include the Three Peaks, Malham Tarn & Cove, Bolton Abbey, Stump Cross Caverns, Kilnsey Horse Trekking Centre, Embsay & Bolton Abbey Steam Railway, Skipton Castle, Kilnsey Trout Farm, Bronte Parsonage Museum, Aysgarth Falls and The Forbidden Corner, to name but a few.

THE PROPERTIES

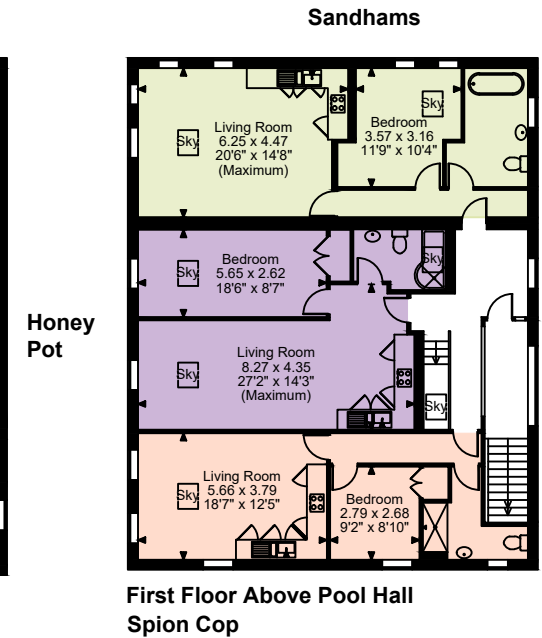
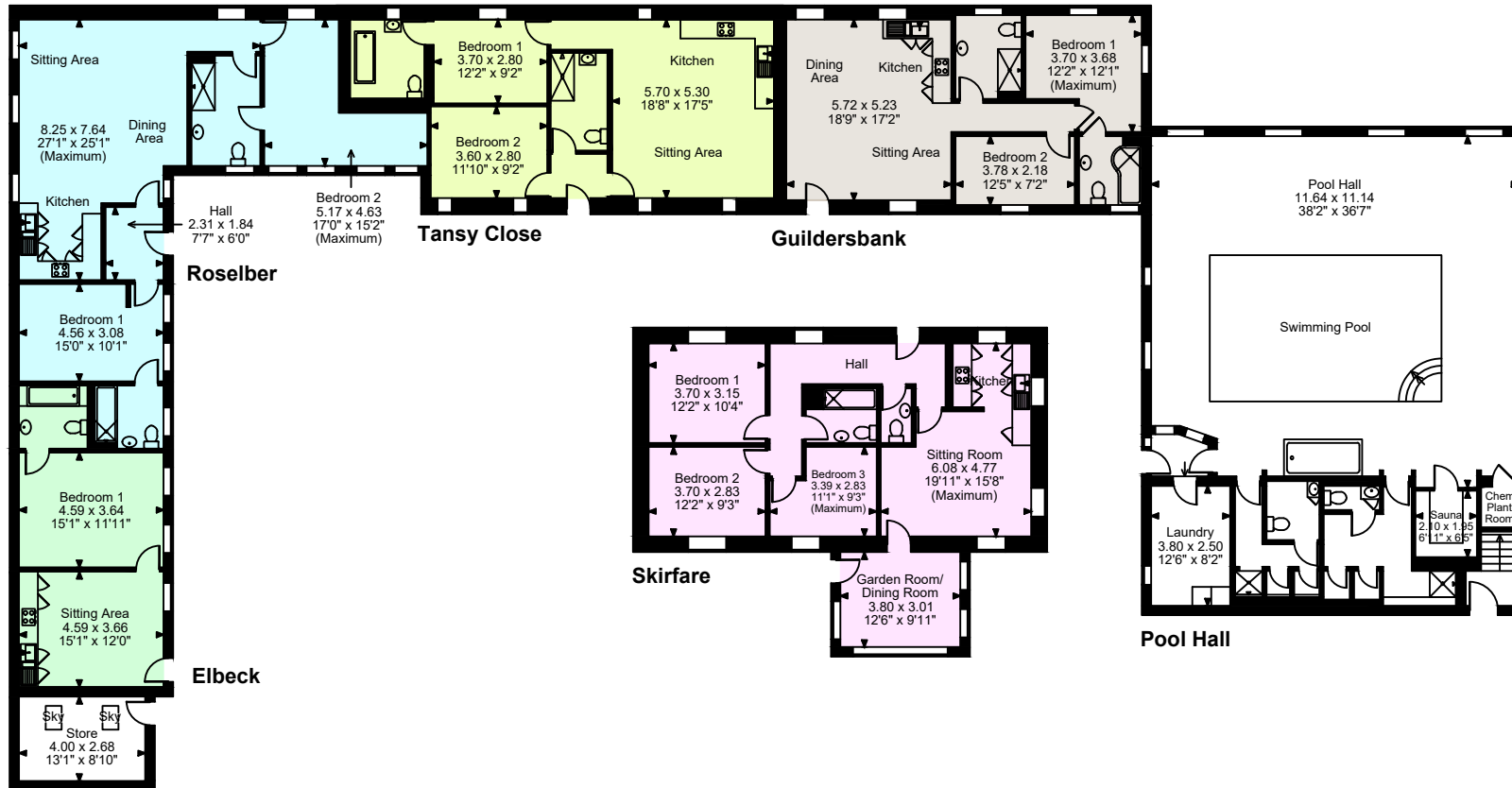
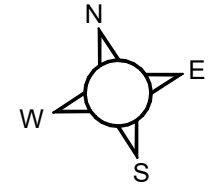
- GUILDERSBANK – Sleeps 4 guests (2 bedrooms)
- TANSY CLOSE – Sleeps 4 guests (2 bedrooms)
- ROSELBER – Sleeps 6 guests (2 bedrooms)
- ELBECK – Sleeps 2 guests (1 bedroom)
- SKIRFARE – Sleeps 6 guests (3 bedroom)
- SPION COP – Sleeps 2 guests (1 bedroom)
- HONEY POT – Sleeps 2 guests (1 bedroom)
- SANDHAMS – Sleeps 2 guests (1 bedroom)

HISTORY

The current owners converted the original farm buildings into a selection of individual holiday cottages and apartments in 1994, since then they have thrived as a fantastic all year round holiday complex. The cottages and apartments are a unique cluster of family run, award winning properties, with many retaining their unique original features.



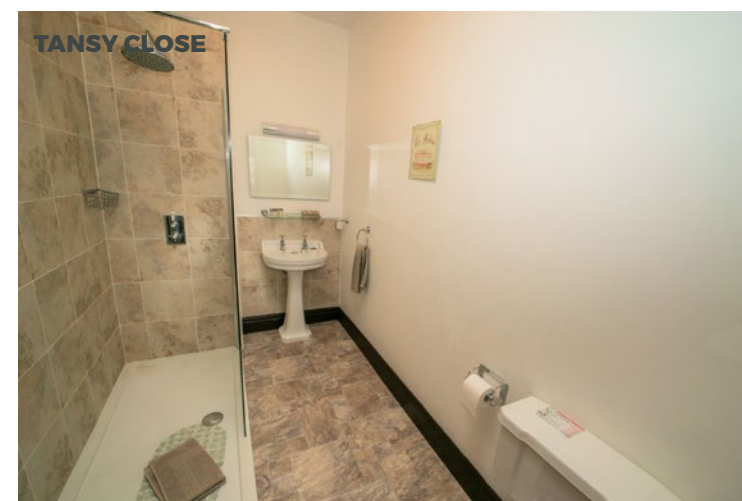
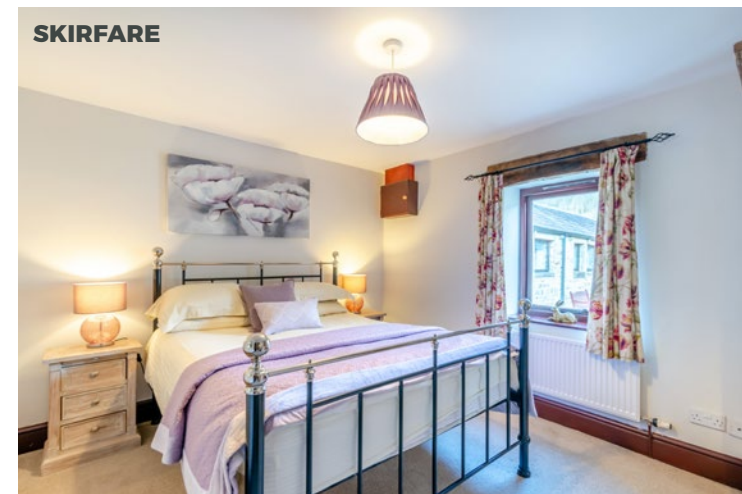
Stonelands Farmyard Cottages, Litton
Approximate Gross Internal Area
Total = 7,545 sq ft / 701 sq m



FOR ILLUSTRATIVE PURPOSES ONLY - NOT TO SCALE

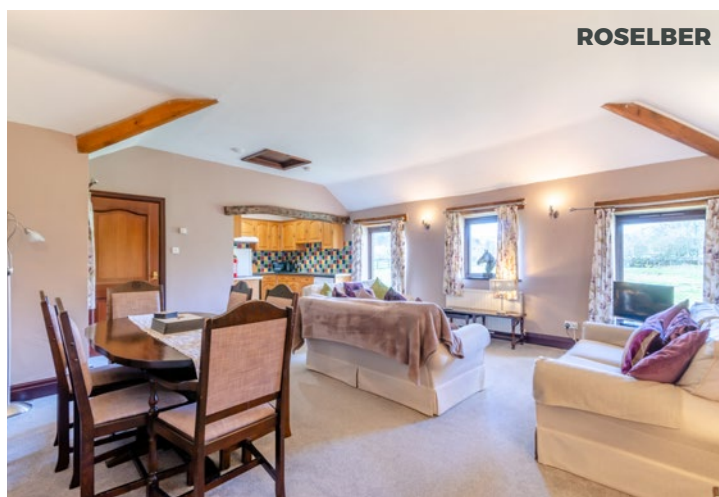
The position & size of doors, windows, appliances and other features are approximate only.

© ehouse. Unauthorised reproduction prohibited. Drawing ref. dig/8543631/SS

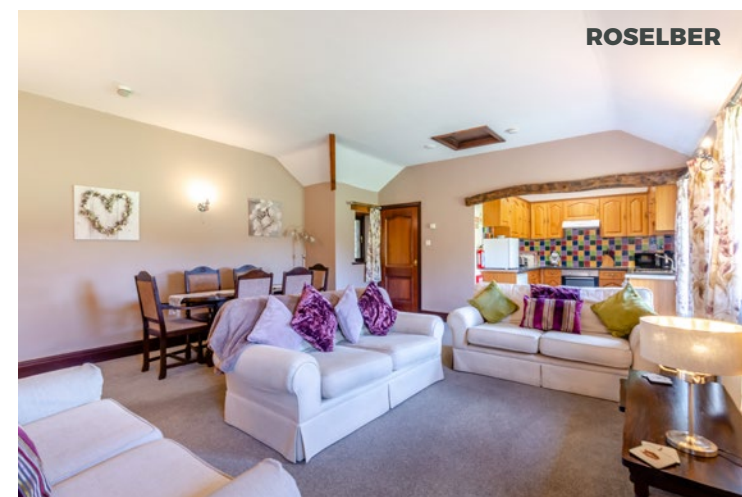




ROSELBER



ROSELBER



ROSELBER



ELBECK



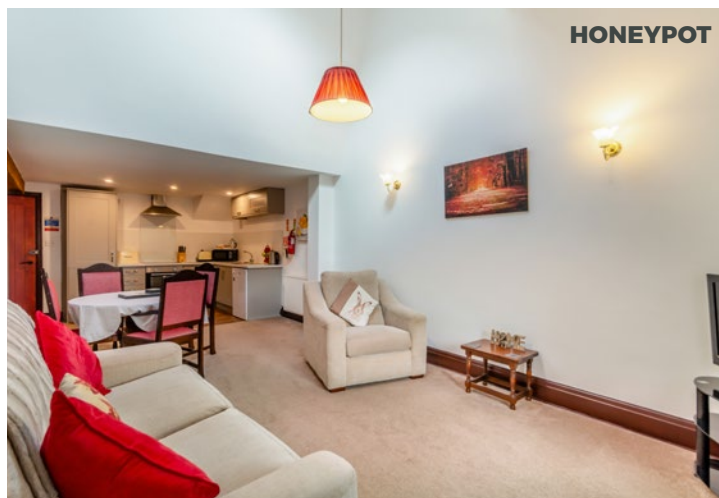
ELBECK



ELBECK



SANDHAMS



HONEYPOT



SPION COP





THE BUSINESS

Stonelands Farmyard Cottages are open all year round. The business is VAT registered and was established 31 years ago. It is family run, very well established, profitable with a significant amount of repeat business and a strong level of forward bookings.

Turnover for the year ended 31 March 2024 was £157,953. Further trading information can be provided to bona fide purchasers.

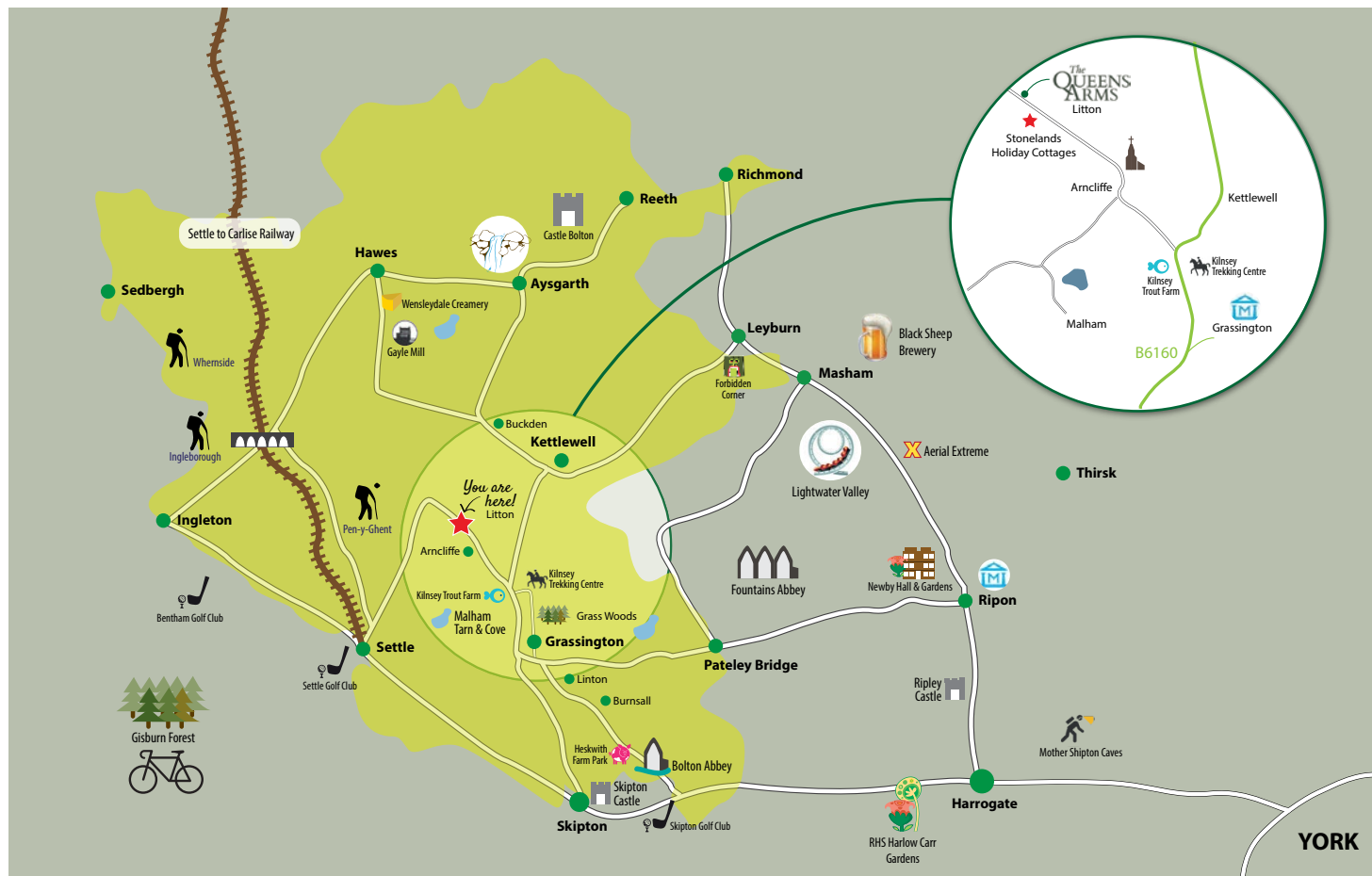
ADDITIONAL INFORMATION

Services: Mains electricity. Spring water supply – filtered and ultraviolet and tested by the council every 6 months. Sewerage treatment plant for drainage. Biomass boiler for heating and hot water – registered with the non domestic renewable heat incentive scheme – 9 years to run and returning approximately £15,000 per annum. Broadband provided by Boundless Networks Ltd.

Viewing: Viewings need to be arranged through Carter Jonas in Harrogate – 01423 523423. The business is operational and appointments will only be possible at certain times, so as not to inconvenience guests.

Directions – BD23 5QH

From Skipton proceed on the B6265 towards Grassington. Shortly after Threshfield village, continue on the B6160 through Kilnsey. Half a mile past Kilnsey there is a turning left to Arncliffe/Litton. Take this left turn and proceed to Arncliffe. Turn right in Arncliffe, passing the school and over the bridge. Follow the road round to the left. After a further mile or so, there is a large layby on the right. The entrance to Stonelands Farmyard Cottages is signposted a short distance along on the left.





Harrogate 01423 523423

Harrogate@carterjonas.co.uk

Regent House, Albert St, Harrogate HG1 1JX

carterjonas.co.uk

Offices throughout the UK

Exclusive UK affiliate of

CHRISTIE'S
INTERNATIONAL REAL ESTATE

IMPORTANT INFORMATION

These particulars are for general information purposes only and do not represent an offer of contract or part of one. Carter Jonas has made every attempt to ensure that the particulars and other information provided are as accurate as possible and are not intended to amount to advice on which you should rely as being factually accurate. You should not assume that the property has all necessary planning, building regulations or other consents and Carter Jonas have not tested any services, facilities or equipment. Any measurements and distances given are approximate only. Purchasers must satisfy themselves of all of the aforementioned by independent inspection or otherwise. Although we make reasonable efforts to update our information, neither Carter Jonas LLP nor anyone in its employment or acting on its behalf makes any representations warranties or guarantees, whether express or implied, in relation to the property, or that the content in these particulars is accurate, complete or up to date. Our images only represent part of the property as it appeared at the time they were taken. If you require further information please contact us.