



IVERNA COURT, KENSINGTON, W8
£2,076.92 per week/£9,000 per month*

Carter Jonas

IVERNA COURT, W8

A smartly presented bright mansion flat situated on the fourth floor (with lift) moments away from High St Kensington. EPC rating: C Iverna Court is a well run portered period building ideally positioned for easy access to excess amenities of the local high street as well as the green spaces of Kensington Gardens.

Large reception with balcony, separate fully fitted kitchen/diner, 3 bedrooms, 2 bathrooms (1 en-suite), en-suite shower room, utility room, cloakroom, terrace. Lift. Portorage. Communal garden. Minimum term is 12 months

Holding Deposit is 2 week's rent

Security Deposit is 6 week's rent

Royal Borough of Kensington & Chelsea - Council tax band: H

For the latest information on broadband and mobile coverage, please visit the Ofcom website <https://checker.ofcom.org.uk/en-gb/broadband-coverage>.

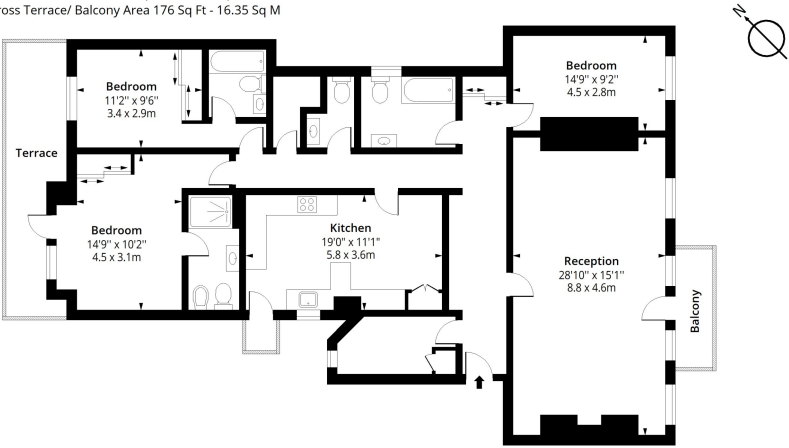
For eligibility for resident parking permits, please refer to the RBKC website <https://www.rbkc.gov.uk/parking-transport-and-streets/visitor-parking-and-pay-phone/guide-parking> website for further details.

- Council Tax Band = H
- Deposit Required = £12,461.54
- Long Let, Minimum term 12 months
- High St Kensington underground
- EPC = C
- Furnished

Energy Efficiency Rating		
	Current	Potential
Very energy efficient - lower running costs		
(91-100) A		
(81-90) B		
(69-80) C		
(55-68) D		
(39-54) E		
(21-38) F		
(1-20) G		
Not energy efficient - higher running costs		
England, Scotland & Wales		
EU Directive 2002/91/EC		

Iverna Court, W8

Approx. Gross Internal Area 1726 Sq Ft - 160.35 Sq M
Approx. Gross Terrace/ Balcony Area 176 Sq Ft - 16.35 Sq M



Fourth Floor

Floor Area 1726 Sq Ft - 160.35 Sq M



Measured according to RICS IPMS2. Floor plan is for illustrative purposes only and is not to scale. Every attempt has been made to ensure the accuracy of the floor plan shown, however all measurements, fixtures, fittings and data shown are an approximate interpretation for illustrative purposes only. 1 sq m = 10.76 sq feet.

lpaplus.com

Date: 6/6/2024



Kensington & Chelsea Lettings 020 7584 7020

chelsea@carterjonas.co.uk
25-27 Harrington Road, London, SW7 3EU



Classification L2 - Business Data

IMPORTANT INFORMATION

These particulars are for general information purposes only and do not represent an offer or contract or part of one. Carter Jonas or anyone in their employment has made every attempt to ensure that the particulars and other information provided are as accurate as possible and they are not intended to amount to advice on which you should rely as being factually accurate. Full information which may be relevant to your decision regarding the property can be found on the property listing on [carterjonas.co.uk](https://www.carterjonas.co.uk) or a separately available material information sheet, and we would advise you to confirm the details of any material information prior to any offer being submitted. You should not assume that the property has all necessary planning, building regulations or other consents and Carter Jonas has not tested any services, facilities, or equipment. Any measurements and distances given are approximate only. Where Carter Jonas has been provided with a floorplan by a third party, we cannot guarantee that the floorplan has been measured in accordance with IPMS. Purchasers or prospective tenants must satisfy themselves of all of the aforementioned by independent inspection or otherwise. Our images only represent part of the property as it appeared at the time they were taken and do not represent the furnishings included; these are confirmed in a separate inventory. If you require further information, please contact us. *Administration fees may apply depending on tenancy type. Please contact your local branch for this information.