



**PARK LANE, MAYFAIR, W1K**  
£1,153.85 per week\*

**Carter Jonas**



---

# FLAT 68, PARK LANE, MAYFAIR, LONDON, W1K 1PU

A one-bedroom apartment of approximately 531 square feet

- Furnished
- 1 Bedroom
- 1 Bathroom
- 1 Reception Room

## THE PROPERTY

This newly refurbished apartment is situated on the third floor of one of Mayfair's most prestigious buildings with 24 hr concierge and lift and located opposite Hyde Park and close to the shopping facilities of Oxford Street and transport links.

## LOCATION

Mayfair is London's most fashionable destination. With London's finest buildings, largest concentration of luxury hotels, best restaurants, bars, shopping, open spaces and hidden treasures all nestled together in a beautiful village setting.

Nearest Tube: Marble Arch/ Hyde Park Corner

AST

The deposit will be £6,923.10 at a rental value of £1,153.85 asking price)

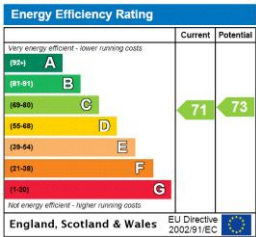
Holding deposit = 1 weeks rent of £1,153.85

Deposit is 6weeks rent (£1,153.85 pw = £6,923.10 deposit)





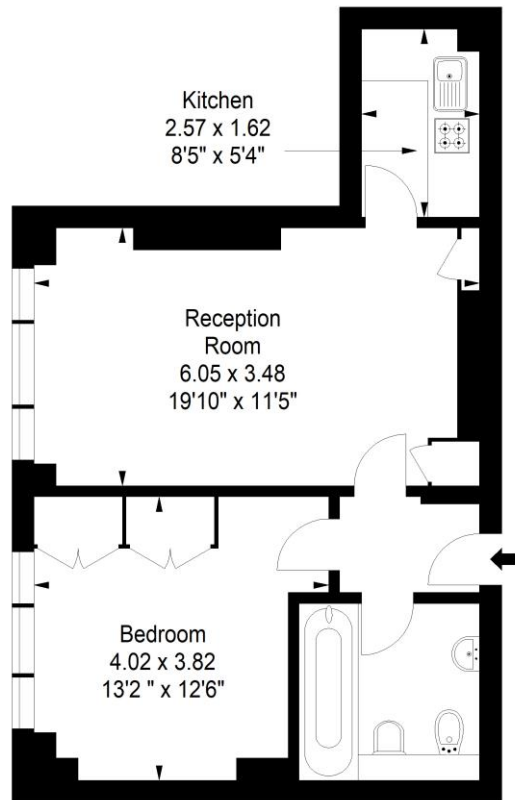
ADDITIONAL INFORMATION	
Offers	Available for a minimum term of 12 months longer terms will be considered
Viewing	Strictly by appointment
Local Authority	Westminster County Council - Council Tax Band F
Material Information	Hot water - communal Heating – air source heat pump, warm air electric Copper Broadband



**Flat 68**  
**55 Park Lane, W1K**  
 Gross internal area (approx)  
**49.33 sq m (531 sq ft)**

**For Identification purposes Only. Not To Scale.**

All Calculations include Any/All Areas Under 1.5m Head Height.  
 \* As Defined by RICS - Code of Measuring Practice.



**Third Floor**



**T: 020 7493 0676**

18 Davies Street, Mayfair, London, W1K 3DS

E: [mayfair@carterjonas.co.uk](mailto:mayfair@carterjonas.co.uk)



*Exclusive UK affiliate of*

**CHRISTIE'S**  
 INTERNATIONAL REAL ESTATE

Classification L2 - Business Data

**IMPORTANT INFORMATION**

These particulars are for general information purposes only and do not represent an offer or contract or part of one. Carter Jonas or anyone in their employment has made every attempt to ensure that the particulars and other information provided are as accurate as possible and they are not intended to amount to advice on which you should rely as being factually accurate. Full information which may be relevant to your decision regarding the property can be found on the property listing on [carterjonas.co.uk](http://carterjonas.co.uk) or a separately available material information sheet, and we would advise you to confirm the details of any material information prior to any offer being submitted. You should not assume that the property has all necessary planning, building regulations or other consents and Carter Jonas has not tested any services, facilities, or equipment. Any measurements and distances given are approximate only. Where Carter Jonas has been provided with a floorplan by a third party, we cannot guarantee that the floorplan has been measured in accordance with IPMS. Purchasers or prospective tenants must satisfy themselves of all of the aforementioned by independent inspection or otherwise. Our images only represent part of the property as it appeared at the time they were taken and do not represent the furnishings included; these are confirmed in a separate inventory. If you require further information, please contact us. \*Administration fees may apply depending on tenancy type. Please contact your local branch for this information.