



**PARK ROAD, LONDON, NW1**  
£795 per week\*

**Carter Jonas**

## FLAT 14 ROSSMORE COURT, PARK ROAD, LONDON, NW1 6XX

- 1 Bedroom
- 1 Bathroom
- Flat/ Apartment
- Long Let
- Furnished

### THE PROPERTY

A 1-bedroom, 1-bathroom apartment is now available for rent on Park Road. It includes a separate kitchen, a bright reception room, a spacious double bedroom, and a modern bathroom. The building offers newly refurbished communal areas, along with a day porter and a passenger lift.

Holding deposit is 1 week's rent = £795 (at asking price)

Security deposit is 5 week's rent = £3,975 (at asking price £795pw)

Minimum term 12 months

Council Tax Band D

For the latest information on broadband and mobile coverage, please visit [checker.ofcom](http://checker.ofcom) for the most up-to-date details.

The apartment is fantastically located moments from the green open spaces of Regents Park. Local transport links include Baker Street Underground Station (Bakerloo, Circle and Hammersmith, Jubilee & Metropolitan Lines) and Marylebone Rail Station.

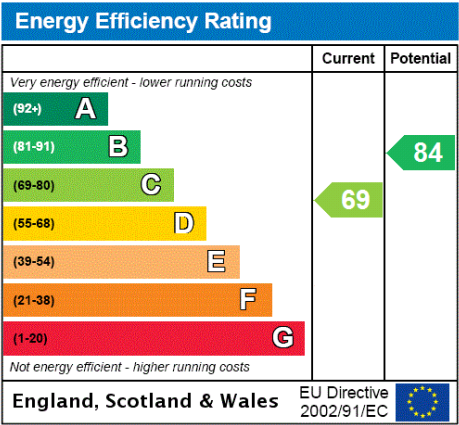
Marylebone still looks and feels something like the village it was 400 years ago and the handsome Georgian development it was 250 years ago. Its High Street in particular is a pleasure to visit; the atmosphere is a bit more cosmopolitan than other parts of the city, and at the same time, a little more relaxed. A pristine haven a short walk from Oxford Circus filled with squares of tall, beautifully proportioned Georgian houses.

## A stylish one-bedroom apartment on the 3rd floor of the period mansion block, Rossmore Court.



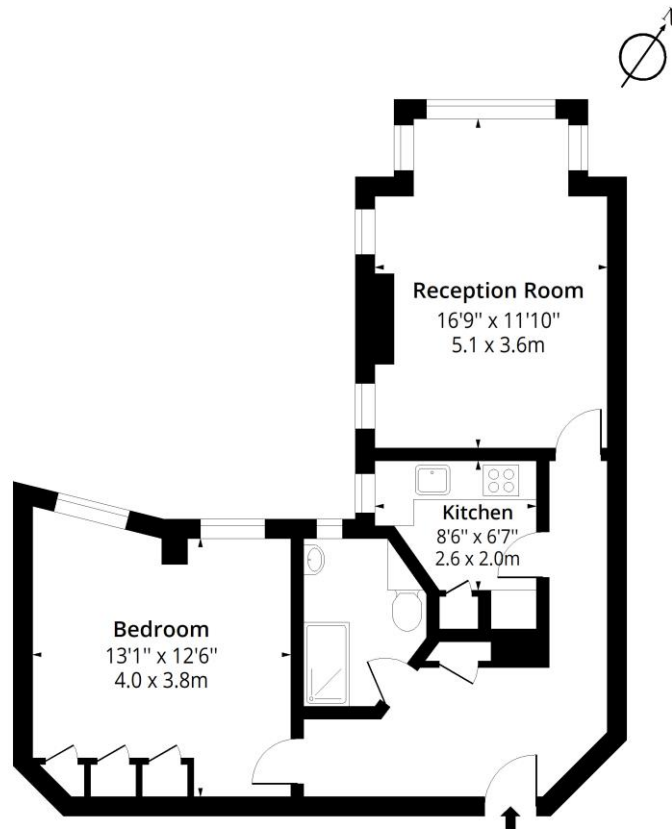
# ADDITIONAL INFORMATION

Offers	Available for a minimum term of 12 months longer terms will be considered
Viewing	Strictly by appointment
Local Authority	Westminster City Council - Council Tax Band D



## Rossmore Court, NW1

Approx. Gross Internal Area 618 Sq Ft - 57.41 Sq M



**Fourth Floor**  
Floor Area 618 Sq Ft - 57.41 Sq M



Measured according to RICS IPMS2. Floor plan is for illustrative purposes only and is not to scale. Every attempt has been made to ensure the accuracy of the floor plan shown, however all measurements, fixtures, fittings and data shown are an approximate interpretation for illustrative purposes only. 1 sq m = 10.76 sq feet.

lpaplus.com

Date: 20/7/2023

**T: 020 7486 8866**

37 New Cavendish Street, London, W1G 9TL

E: marylebone.lettings@carterjonas.co.uk

A member of



*Exclusive UK affiliate of*

**CHRISTIE'S**  
INTERNATIONAL REAL ESTATE

Classification L2 - Business Data



### IMPORTANT INFORMATION

These particulars are for general information purposes only and do not represent an offer or contract or part of one. Carter Jonas or anyone in their employment has made every attempt to ensure that the particulars and other information provided are as accurate as possible and they are not intended to amount to advice on which you should rely as being factually accurate. Full information which may be relevant to your decision regarding the property can be found on the property listing on [carterjonas.co.uk](http://carterjonas.co.uk) or a separately available material information sheet, and we would advise you to confirm the details of any material information prior to any offer being submitted. You should not assume that the property has all necessary planning, building regulations or other consents and Carter Jonas has not tested any services, facilities, or equipment. Any measurements and distances given are approximate only. Where Carter Jonas has been provided with a floorplan by a third party, we cannot guarantee that the floorplan has been measured in accordance with IPMS. Purchasers or prospective tenants must satisfy themselves of all of the aforementioned by independent inspection or otherwise. Our images only represent part of the property as it appeared at the time they were taken and do not represent the furnishings included; these are confirmed in a separate inventory. If you require further information, please contact us. \*Administration fees may apply depending on tenancy type. Please contact your local branch for this information.