



GREAT PORTLAND STREET, LONDON, W1W
£1,590 per week*

Carter Jonas

FLAT 7C, THE ARMITAGE APARTMENTS, GREAT PORTLAND STREET, LONDON, W1W 5QR

- Two modern Bedrooms
- One Reception Room/ kitchen
- Fully Fitted Kitchen
- Two beautifully designed bathrooms
- Weekly Housekeeping (1x per week)
- Access to Exclusive Residents' Gym
- Daytime Concierge
- 24 Hour CCTV
- Fast WIFI Included
- Sky HD TV

THE PROPERTY

The apartment boasts an exceptional finish, featuring a spacious reception room with elegant wooden floors that extend throughout the property. It includes a modern, fully fitted kitchen that seamlessly connects to the living area.

There are two generously sized double bedrooms, complemented by two contemporary bathroom- one equipped with a shower and the other featuring both a bathtub and a shower for added convenience.

This lovely home combines style and functionality, making it perfect for comfortable living.

Complimentary services included within this are a weekly housekeeping service (including linen and towel change), Sky HD TV, Fibre Optic Broadband (WIFI) and access to the private residents' gym- access via bookings. Please note that this rate is EXCLUSIVE of council tax.

Great Portland Street is a vibrant thoroughfare in London, known for its mix of shops, eateries, and cultural attractions. Situated in the heart of the city. It serves as a vibrant hub for locals and visitors alike. The area benefits from excellent transport links, with the Great Portland Street, Regent's Park, and Warren Street tube stations in proximity. These well-connected stations facilitate seamless travel, allowing residents and tourists to explore the city effortlessly.

Stylish and contemporary loft apartment featuring a generous reception area, fully equipped kitchen, two double bedrooms, and two modern bathrooms is now available for rent.



12+ months: £1,590 per week (including the £90 per week utilities)

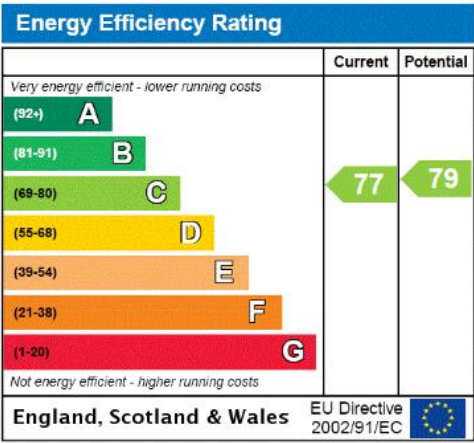
Security deposit is 6 week's rent = £9,540 (at asking price £1,590pw)

Minimum Term 12 months

Council Tax Band F

ADDITIONAL INFORMATION

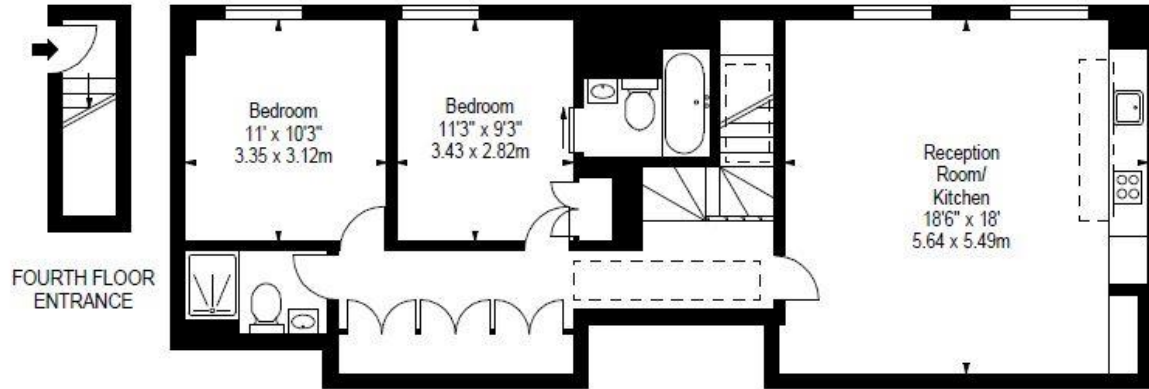
Offers	Available for a minimum term of 12 months longer terms will be considered
Viewing	Strictly by appointment
Local Authority	Westminster City Council - Council Tax Band F



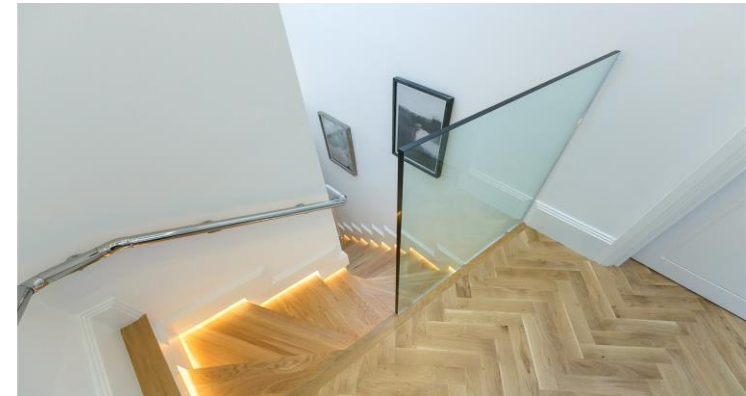
FLAT 7C
222 GREAT PORTLAND STREET W1

APPROX. GROSS INTERNAL AREA *
826 Ft² - 76.74 M²

Illustration For Identification Only, Not to Scale
All Calculations include Any/All Areas Under 1.5m Head Height.
*As Defined by RICS - Code of Measuring Practice



FIFTH FLOOR



T: 020 7486 8866

37 New Cavendish Street, London, W1G 9TL

E: marylebone.lettings@carterjonas.co.uk

A member of



Exclusive UK affiliate of

CHRISTIE'S
INTERNATIONAL REAL ESTATE

IMPORTANT INFORMATION

These particulars are for general information purposes only and do not represent an offer or contract or part of one. Carter Jonas or anyone in their employment has made every attempt to ensure that the particulars and other information provided are as accurate as possible and they are not intended to amount to advice on which you should rely as being factually accurate. Full information which may be relevant to your decision regarding the property can be found on the property listing on carterjonas.co.uk or a separately available material information sheet, and we would advise you to confirm the details of any material information prior to any offer being submitted. You should not assume that the property has all necessary planning, building regulations or other consents and Carter Jonas has not tested any services, facilities, or equipment. Any measurements and distances given are approximate only. Where Carter Jonas has been provided with a floorplan by a third party, we cannot guarantee that the floorplan has been measured in accordance with IPMS. Purchasers or prospective tenants must satisfy themselves of all of the aforementioned by independent inspection or otherwise. Our images only represent part of the property as it appeared at the time they were taken and do not represent the furnishings included; these are confirmed in a separate inventory. If you require further information, please contact us. *Administration fees may apply depending on tenancy type. Please contact your local branch for this information.