



SEYMOUR PLACE, MARYLEBONE, W1H
£890 per week*

Carter Jonas

FLAT 1, SEYMOUR PLACE, MARYLEBONE, LONDON, W1H 7NJ

- Professionally managed by The Portman Estate
- Complimentary membership to Portman Concierge
- Two Bedrooms
- Two Bathrooms (1 ensuite)
- One Reception Room
- Separate Kitchen
- First Floor
- Unfurnished or furnished at extra cost

THE PROPERTY

This lovely apartment is modern and recently redecorated. It comprises a reception room with wood floors, separate kitchen, two good size double bedrooms and two bathrooms (one ensuite).

The property is professionally managed by The Portman Estate.

Available for long term rental on an unfurnished basis, or furnished (at separate cost)

Complimentary membership to Portman Concierge.

Seymour Place is situated close to Marylebone High Street and its lively section of stores, restaurants, and cafes. The open areas and leisure amenities of Hyde Park lie to the south. Edgware Road (Circle/District/Hammersmith & City), Marylebone (Bakerloo), Marble Arch (Central), Baker Street (Jubilee/Bakerloo), and Paddington are just a some of the nearby convenient transportation hubs that are close to the property (Elizabeth & mainline Station).

The Portman Estate is a prestigious property portfolio located in the heart of central London, covering 110 acres of prime real estate in Marylebone. Renting through The Portman Estate comes with the advantage of an in-house property management team, providing responsive, hands-on service to ensure residents' needs are met quickly and efficiently. This dedicated team helps maintain the quality of living, handling everything from routine maintenance to emergency repairs, making the rental experience hassle-free.

Holding deposit is 1 week's rent = £890 (at asking price)

A smart two-bedroom apartment on the first floor of this period building amongst all the shops and restaurants of Seymour Place, and close to Oxford Street & Hyde Park.



Security deposit is 5 week's rent = £4,450 (at asking price £890pw)

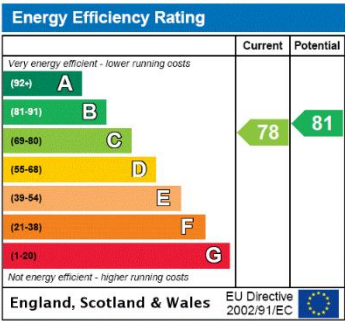
Minimum Term 12 months

Council Tax Band F

For the latest information on broadband and mobile coverage, please visit checker.ofcom for the most up-to-date details.

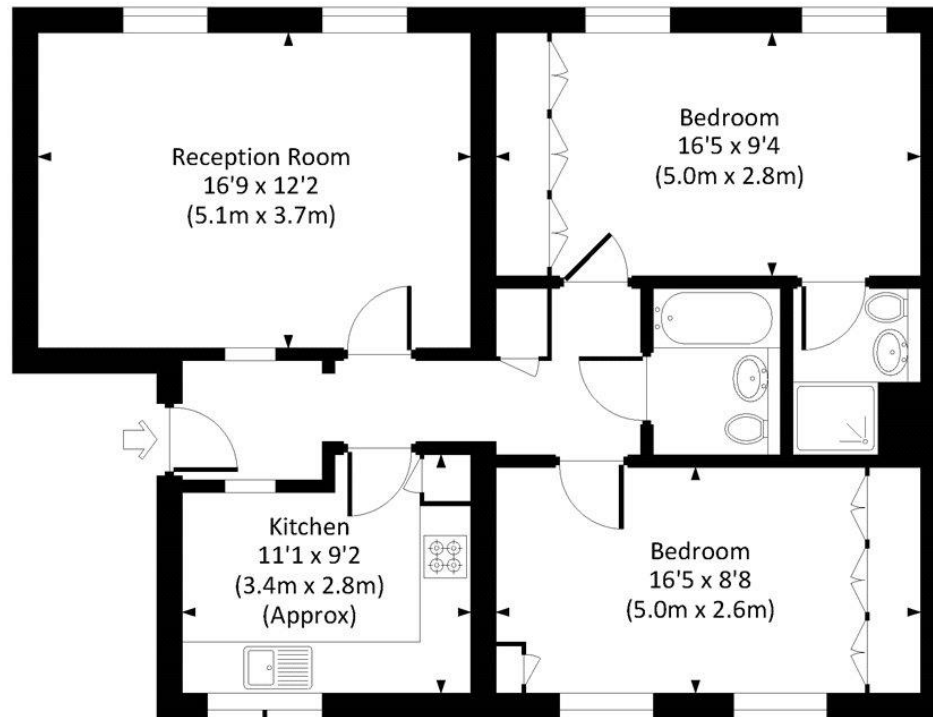
ADDITIONAL INFORMATION

| | |
|-----------------|---|
| Offers | Available for a minimum term of 12 months longer terms will be considered |
| Viewing | Strictly by appointment |
| Local Authority | Westminster City Council - Council Tax Band F |



SEYMOUR PLACE, W1

Approx. gross internal area
794 Sq Ft. / 73.8 Sq M.



FIRST FLOOR



All measurements have been made in accordance with RICS code of Measuring Practice which are approximate only and only for illustrative purposes. For the avoidance of doubt, Dowling Jones Design shall not be liable for any reliance on these measurements. © 2018 www.dowlingjones.com 020 7610 9933



T: 020 7486 8866

37 New Cavendish Street, London, W1G 9TL

E: marylebone.lettings@carterjonas.co.uk

A member of



Exclusive UK affiliate of

CHRISTIE'S
INTERNATIONAL REAL ESTATE

Classification L2 - Business Data

IMPORTANT INFORMATION

These particulars are for general information purposes only and do not represent an offer or contract or part of one. Carter Jonas or anyone in their employment has made every attempt to ensure that the particulars and other information provided are as accurate as possible and they are not intended to amount to advice on which you should rely as being factually accurate. Full information which may be relevant to your decision regarding the property can be found on the property listing on carterjonas.co.uk or a separately available material information sheet, and we would advise you to confirm the details of any material information prior to any offer being submitted. You should not assume that the property has all necessary planning, building regulations or other consents and Carter Jonas has not tested any services, facilities, or equipment. Any measurements and distances given are approximate only. Where Carter Jonas has been provided with a floorplan by a third party, we cannot guarantee that the floorplan has been measured in accordance with IPMS. Purchasers or prospective tenants must satisfy themselves of all of the aforementioned by independent inspection or otherwise. Our images only represent part of the property as it appeared at the time they were taken and do not represent the furnishings included; these are confirmed in a separate inventory. If you require further information, please contact us. *Administration fees may apply depending on tenancy type. Please contact your local branch for this information.