



**PORTLAND PLACE, LONDON, W1B**  
£1,675 per week\*

**Carter Jonas**

## FLAT 6, PORTLAND PLACE, LONDON, W1B 1QT

- Modern, spacious reception room
- Fully fitted kitchen
- Two stunning bedrooms
- Two bathrooms
- Terrace/ Balcony
- Heating and Hot water included
- Air-conditioning
- Fibre Optic broadband provided by G Network is installed in the property
- Lift
- Porter

### THE PROPERTY

Located on Portland Place, this stylish apartment features a modern, spacious reception room with a charming fireplace and white tiled flooring throughout. The fully fitted kitchen boasts beautiful white cupboards that make the space look bigger and brighter. The stunning two bedrooms have large windows and built-in wardrobes, providing plenty of storage.

There are two bathrooms—one with a shower and the other with a bathtub—both featuring elegant marble feature walls and floating sinks.

The flat also offers access to a beautiful terrace from the reception room, perfect for relaxing outdoors. Additionally, balconies from the kitchen and master bedroom.

Portland Place is a prominent street located in the heart of London, nestled between the bustling areas of Marylebone and Fitzrovia. Renowned for its elegant Georgian architecture, Portland Place is home to several notable institutions, including the BBC's Broadcasting House and the Royal Institute of British Architects. The road runs north from Oxford Circus, offering a mix of cultural and professional spaces. The nearest train stations include Great Portland Street, approximately 0.2 miles to the northwest, providing access to the Metropolitan, Circle, and Hammersmith & City lines. Also close by is Oxford Circus Station, about 0.5 miles to the south, facilitating travel via the Bakerloo, Central, and Victoria lines.

Holding deposit is 1 week's rent = £1,675 (at asking price)

Stylish Portland Place apartment with spacious rooms, modern amenities, beautiful outdoor terraces, and elegant design for comfortable living.





Security deposit is 6 week's rent = £10,050 (at asking price £1,675pw)

Minimum Term 12 months

Council Tax Band G

Fibre Optic broadband provided by G Network is installed in the property

ADDITIONAL INFORMATION

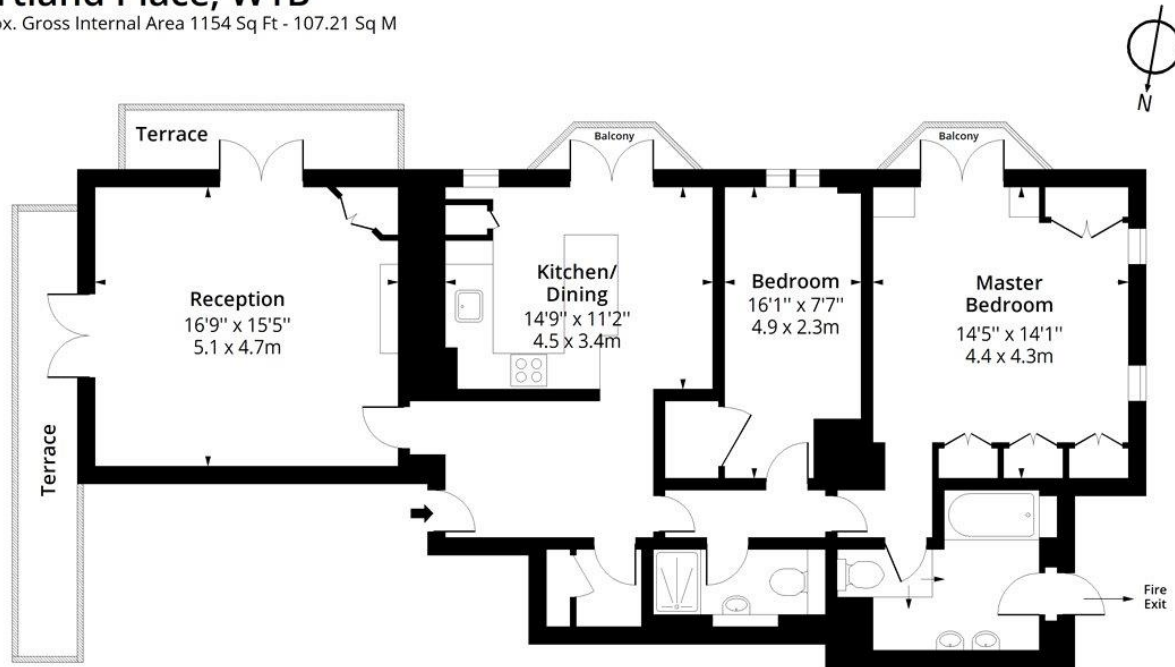
Offers	Available for a minimum term of 12 months longer terms will be considered
Viewing	Strictly by appointment
Local Authority	Westminster City Council - Council Tax Band G

Score	Energy rating	Current	Potential
92+	A		
81-91	B		
69-80	C	75 C	82 B
55-68	D		
39-54	E		
21-38	F		
1-20	G		



# Portland Place, W1B

Approx. Gross Internal Area 1154 Sq Ft - 107.21 Sq M



## Sixth Floor

Floor Area 1154 Sq Ft - 107.21 Sq M



Measured according to RICS IPMS2. Floor plan is for illustrative purposes only and is not to scale. Every attempt has been made to ensure the accuracy of the floor plan shown, however all measurements, fixtures, fittings and data shown are an approximate interpretation for illustrative purposes only. 1 sq m = 10.76 sq feet.

lpaplus.com

Date: 7/12/2025

T: 020 7486 8866

37 New Cavendish Street, London, W1G 9TL

E: marylebone.lettings@carterjonas.co.uk

A member of



Exclusive UK affiliate of

**CHRISTIE'S**  
INTERNATIONAL REAL ESTATE

Classification L2 - Business Data



### IMPORTANT INFORMATION

These particulars are for general information purposes only and do not represent an offer or contract or part of one. Carter Jonas or anyone in their employment has made every attempt to ensure that the particulars and other information provided are as accurate as possible and they are not intended to amount to advice on which you should rely as being factually accurate. Full information which may be relevant to your decision regarding the property can be found on the property listing on [carterjonas.co.uk](http://carterjonas.co.uk) or a separately available material information sheet, and we would advise you to confirm the details of any material information prior to any offer being submitted. You should not assume that the property has all necessary planning, building regulations or other consents and Carter Jonas has not tested any services, facilities, or equipment. Any measurements and distances given are approximate only. Where Carter Jonas has been provided with a floorplan by a third party, we cannot guarantee that the floorplan has been measured in accordance with IPMS. Purchasers or prospective tenants must satisfy themselves of all of the aforementioned by independent inspection or otherwise. Our images only represent part of the property as it appeared at the time they were taken and do not represent the furnishings included; these are confirmed in a separate inventory. If you require further information, please contact us. \*Administration fees may apply depending on tenancy type. Please contact your local branch for this information.