



**MANCHESTER STREET, MARYLEBONE, W1U**  
£634 per week\*

**Carter Jonas**

## FLAT 3, MANCHESTER STREET, MARYLEBONE, LONDON, W1U 7LQ

- Professionally managed by The Portman Estate.
- Complimentary membership to Portman Concierge.
- Studio Room
- Fitted Kitchen
- Shower Room
- High Ceilings
- Long Let
- Unfurnished (or furnished at separate cost)

### THE PROPERTY

It features an extremely spacious main studio room with floor-to-ceiling windows. It also features a good size fully fitted kitchen with space for a kitchen table & chairs, and shower room.

The property is professionally managed by The Portman Estate.

Available for long term rental on an unfurnished basis, or furnished (at separate cost)

Complimentary membership to Portman Concierge.

Manchester Street is conveniently located in the heart of Marylebone Village, just off Manchester Square. It is only a short distance from the restaurants, shops, and attractions of Marylebone and the West End, as well as outdoor spaces of Hyde Park, Regent's Park, and Manchester Square. Transport links are excellent from nearby Bond Street (about 0.5 mile) and Baker Street (about 0.3 mile) underground stations, as well as Marylebone (about 0.6 mile), Paddington (about 1.1 mile), and Euston (about 1.3 mile) mainline stations.

The Portman Estate's 110 acres of land within Marylebone, London W1, has a rich heritage dating back to the 16th century and is the setting for continual investment in premium residential properties, shops and independent businesses. The Portman Estate includes key places of architectural and historical interest along with a vibrant blend of shops, including Portman Village, restaurants, wine-bars, hotels and garden squares - a perfect mix of leisure opportunities for residents in the heart of London's West End.

Holding deposit is 1 weeks rent = £634 (at asking price).

Delightful 1st floor studio with high ceilings and period features in a great location moment from the shops and restaurants of Marylebone High Street and trendy Chiltern Street.





Security deposit is 5 weeks rent = £3,170 (at asking price of £634pw).

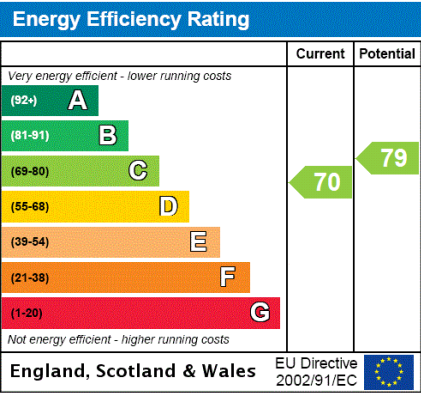
Minimum Term 12 months

Council Tax Band D

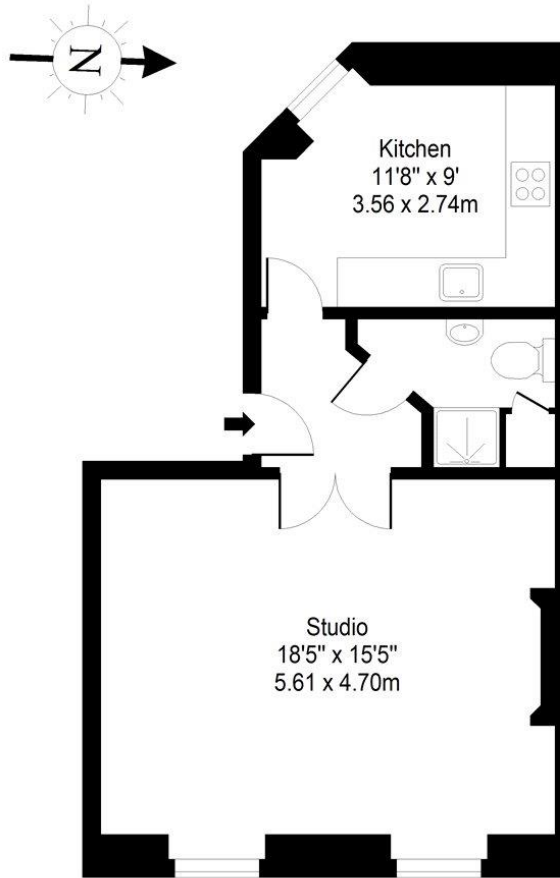
For the latest information on broadband and mobile coverage, please visit [checker.ofcom](https://www.checker.ofcom.gov.uk/) for the most up-to-date details.

ADDITIONAL INFORMATION

Offers	Available for a minimum term of 12 months longer terms will be considered
Viewing	Strictly by appointment
Local Authority	Westminster City Council - Council Tax Band D



## MANCHESTER STREET



### First Floor

Approx. Gross Internal Area 458 Sq Ft - 42.55 Sq M  
For Illustrative Purposes Only - Not To Scale

**T: 020 7486 8866**

37 New Cavendish Street, London, W1G 9TL

E: [marylebone.lettings@carterjonas.co.uk](mailto:marylebone.lettings@carterjonas.co.uk)

A member of



*Exclusive UK affiliate of*

**CHRISTIE'S**  
INTERNATIONAL REAL ESTATE

#### IMPORTANT INFORMATION

These particulars are for general information purposes only and do not represent an offer or contract or part of one. Carter Jonas or anyone in their employment has made every attempt to ensure that the particulars and other information provided are as accurate as possible and they are not intended to amount to advice on which you should rely as being factually accurate. Full information which may be relevant to your decision regarding the property can be found on the property listing on [carterjonas.co.uk](http://carterjonas.co.uk) or a separately available material information sheet, and we would advise you to confirm the details of any material information prior to any offer being submitted. You should not assume that the property has all necessary planning, building regulations or other consents and Carter Jonas has not tested any services, facilities, or equipment. Any measurements and distances given are approximate only. Where Carter Jonas has been provided with a floorplan by a third party, we cannot guarantee that the floorplan has been measured in accordance with IPMS. Purchasers or prospective tenants must satisfy themselves of all of the aforementioned by independent inspection or otherwise. Our images only represent part of the property as it appeared at the time they were taken and do not represent the furnishings included; these are confirmed in a separate inventory. If you require further information, please contact us. \*Administration fees may apply depending on tenancy type. Please contact your local branch for this information.