



**WESTMINSTER CLOSE, BRAMLEY, S66**

£1,500 per month\*

**Carter Jonas**



---

# WESTMINSTER CLOSE, BRAMLEY, ROTHERHAM, SOUTH YORKSHIRE, S66 1WJ

A four bedroom detached property situated within the  
Village of Bramley

- Four Bedrooms
- Three Receptions
- Three Bathrooms
- Kitchen/Dining Room
- Utility Room
- Off Road Parking
- Double Garage
- Unfurnished

## THE PROPERTY

Accommodation comprising:- Entrance hall, downstairs cloakroom, kitchen/dining room, utility room, lounge, snug, bedroom 5/study. To the first floor are four bedrooms, two ensuite shower rooms and separate family bathroom. Externally there is off road parking for two cars, double garage and enclosed rear garden.

Available for a six or twelve month tenancy unfurnished from Mid March 2025

EPC - B Council Tax Band F - Please see Rotherham Metropolitan Borough Council for current costs.

Pets considered. No access to loft. Mains gas, electricity waster and drainage are connected to the property. Gas central heating.

Internet & Mobile: Further information on availability and speeds can be found at [checker.ofcom.org.uk](http://checker.ofcom.org.uk)

Flood Risk - Low

At a rent of £1500 per calendar month.

Holding deposit of 1 weeks rent £346

Security deposit of 5 weeks rent £1730



---

## ADDITIONAL INFORMATION

---

Offers	Available for an initial term of 12 months
--------	--

---

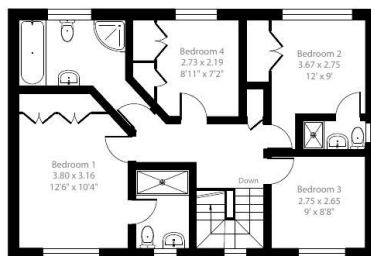
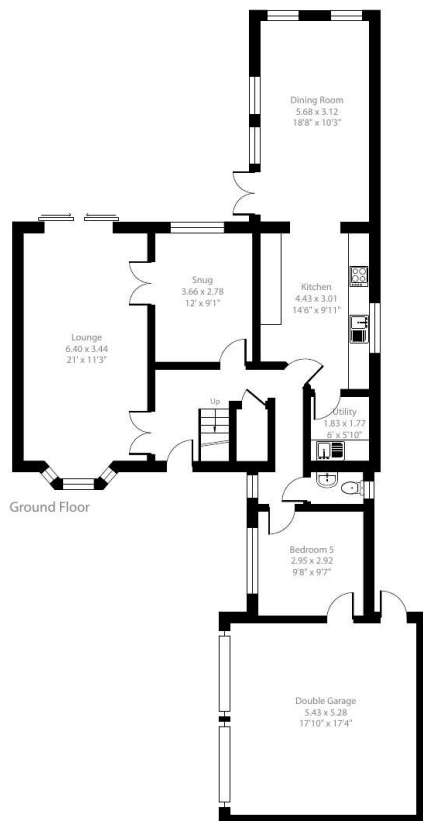
Viewing	Strictly by appointment
---------	-------------------------

---

Local Authority	- Council Tax Band F
-----------------	----------------------

---





## Westminster Close, S66

Approximate Area = 1710 sq ft / 158.8 sq m

Garage = 309 sq ft / 28.7 sq m

Total = 2019 sq ft / 187.5 sq m

For identification only - Not to scale



### IMPORTANT INFORMATION

These particulars are for general information purposes only and do not represent an offer or contract or part of one. Carter Jonas or anyone in their employment has made every attempt to ensure that the particulars and other information provided are as accurate as possible and they are not intended to amount to advice on which you should rely as being factually accurate. Full information which may be relevant to your decision regarding the property can be found on the property listing on [carterjonas.co.uk](http://carterjonas.co.uk) or a separately available material information sheet, and we would advise you to confirm the details of any offer being submitted. You should not assume that the property has all necessary planning, building regulations or other consents and Carter Jonas has not tested any services, facilities, or equipment. Any measurements and distances given are approximate only. Where Carter Jonas has been provided with a floorplan by a third party, we cannot guarantee that the floorplan has been measured in accordance with IPMS. Purchasers or prospective tenants must satisfy themselves of all of the aforementioned by independent inspection or otherwise. Our images only represent part of the property as it appeared at the time they were taken and do not represent the furnishings included; these are confirmed in a separate inventory. If you require further information, please contact us. \*Administration fees may apply depending on tenancy type. Please contact your local branch for this information.

Floor plan produced in accordance with RICS Property Measurement 2nd Edition, Incorporating International Property Measurement Standards (IPMS2 Residential). © nitchecom 2025. Produced for Carter Jonas. REF: 1248066

T: 01865 511444

Mayfield House, 256 Banbury Road, Oxford, Oxfordshire, OX2 7DE

E: [oxfordresilettings@carterjonas.co.uk](mailto:oxfordresilettings@carterjonas.co.uk)

A member of



Exclusive UK affiliate of

**CHRISTIE'S**  
INTERNATIONAL REAL ESTATE

Classification L2 - Business Data