



THE CHILTERN, GLOUCESTER GREEN, OX1
£1,900 per month*

Carter Jonas

THE CHILTERNS, GLOUCESTER GREEN, OXFORD, OX1 2DF

- 2 bedrooms
- 1 reception room
- Unfurnished
- Lift
- Balcony
- City Centre

THE PROPERTY

A first floor apartment in The Chilterns, a highly sought after City Centre development in Gloucester Green arranged around a central plaza with shops, cafes, restaurants and theatres. The apartment offers well laid out two bedroom accommodation with a balcony. There is lift for access.

Gloucester Green has a vibrant open-air market three times a week and provides an ideal location for public transport links to London by coach. The rail station is approximately half a mile away.

Available 8th September for a minimum 12 month tenancy. Unfurnished.

Mains electricity and water are connected to the property. No gas.

Internet & Mobile: Further information on availability and speeds can be found at checker.ofcom.org.uk

The property is Leasehold.

Flood zone 1: Low risk

Council Tax Band E (Oxford City Council)/ EPC Rating C

Holding deposit = 1 weeks rent £438

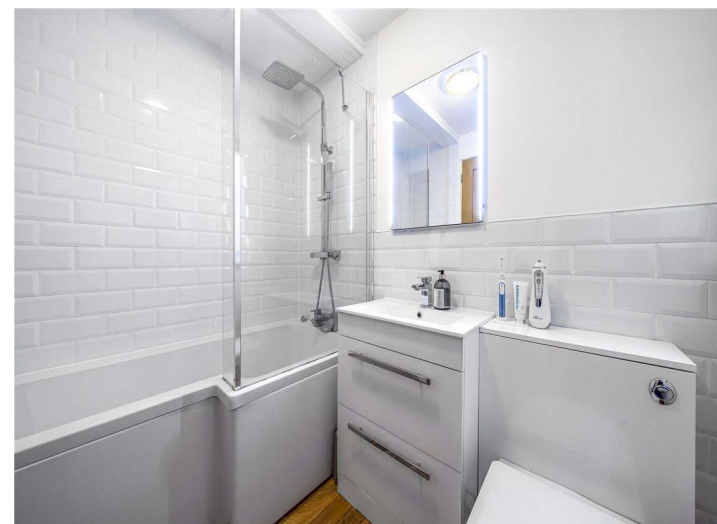
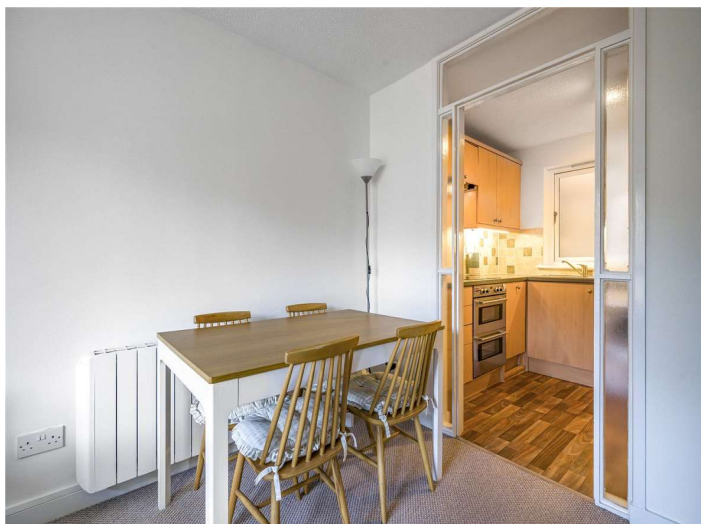
Deposit = 5 weeks rent @ £1900 pcm = £2192

A 2 bedroom apartment with a covered balcony on the first floor of this City Centre development with the added benefit of a lift.



ADDITIONAL INFORMATION

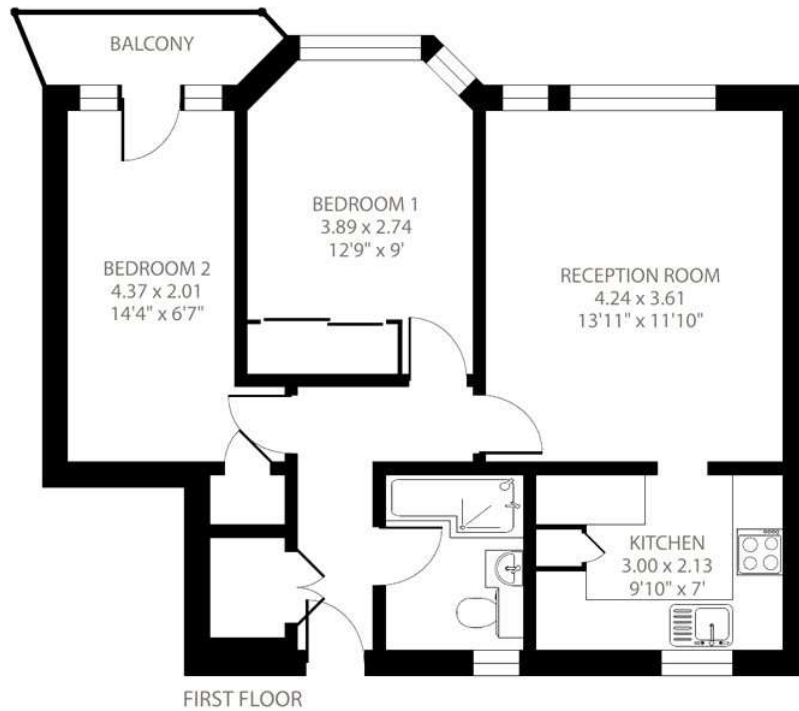
Offers	Available for a minimum term of 12 months longer terms will be considered
Viewing	Strictly by appointment
Local Authority	Oxford City Council - Council Tax Band E



The Chilterns, Gloucester Green, Oxford, OX1

Approximate Area = 584 sq ft / 54.3 sq m

For identification only - Not to scale



Certified
Property
Measurer

Floor plan produced in accordance with RICS Property Measurement Standards incorporating International Property Measurement Standards (IPMS2 Residential). © nchecon 2022. Produced for Carter Jonas REF: 964545

T: 01865 511444

Mayfield House, 256 Banbury Road, Oxford, Oxfordshire, OX2 7DE

E: oxfordresilettings@carterjonas.co.uk

A member of



Exclusive UK affiliate of

CHRISTIE'S
INTERNATIONAL REAL ESTATE

Classification L2 - Business Data



IMPORTANT INFORMATION

These particulars are for general information purposes only and do not represent an offer or contract or part of one. Carter Jonas or anyone in their employment has made every attempt to ensure that the particulars and other information provided are as accurate as possible and they are not intended to amount to advice on which you should rely as being factually accurate. Full information which may be relevant to your decision regarding the property can be found on the property listing on carterjonas.co.uk or a separately available material information sheet, and we would advise you to confirm the details of any material information prior to any offer being submitted. You should not assume that the property has all necessary planning, building regulations or other consents and Carter Jonas has not tested any services, facilities, or equipment. Any measurements and distances given are approximate only. Where Carter Jonas has been provided with a floorplan by a third party, we cannot guarantee that the floorplan has been measured in accordance with IPMS. Purchasers or prospective tenants must satisfy themselves of all of the aforementioned by independent inspection or otherwise. Our images only represent part of the property as it appeared at the time they were taken and do not represent the furnishings included; these are confirmed in a separate inventory. If you require further information, please contact us. *Administration fees may apply depending on tenancy type. Please contact your local branch for this information.