



BRIDGMAN ROAD, LONDON, W4
£2,999 per month*

Carter Jonas

BRIDGMAN ROAD, LONDON, W4

- Three bedrooms
- One bathroom, one WC
- Big garden
- Double glazed windows
- Good storage space
- Pets considered

THE PROPERTY

The property comprises a spacious reception at the front with a guest loo and an eat-in kitchen that leads to south east facing garden.

On the first floor there are three great sized bedrooms with built in storage and a family bathroom.

Bridgman Road is located within close proximity of South Acton (Overground) and Chiswick Park (District) underground stations. The property is also close to local amenities and bus links on Acton Lane (0.3 miles) and Chiswick High Road (0.6 miles). Local schools and green spaces are also close by.

Holding deposit: 1 week's rent - £692.08

Security deposit: 5 weeks' rent - £3460.40

Parking: on street via a permit

Pets: considered

An excellent three-bedroom family house in Chiswick. EPC rating D

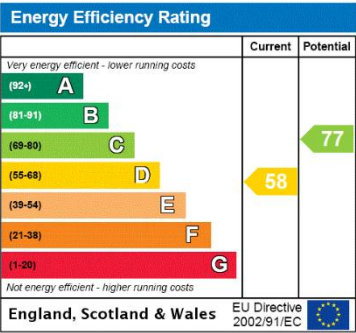


ADDITIONAL INFORMATION

Offers Available for a minimum term of 12 months
longer terms will be considered

Viewing Strictly by appointment

Local Ealing Council - Council Tax Band F
Authority



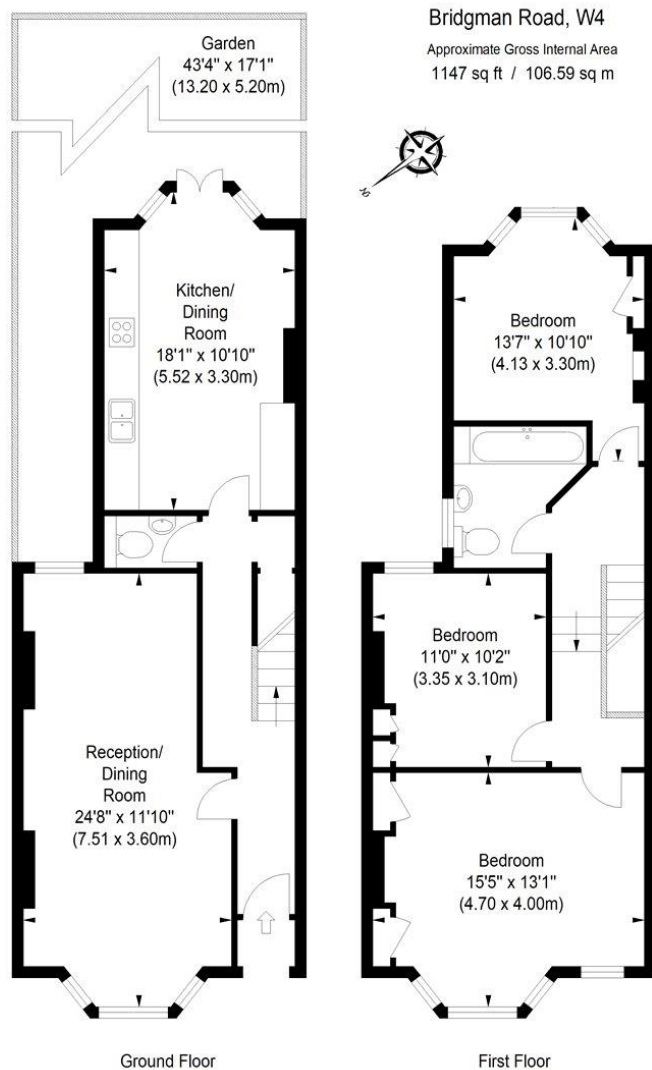


ILLUSTRATION FOR IDENTIFICATION PURPOSES ONLY

ALL MEASUREMENTS ARE MAXIMUM, AND INCLUDE WINDOW BAYS AND WARDROBES WHERE APPLICABLE
THIS PLAN MUST NOT BE REPRODUCED BY ANY OTHER PERSON WITHOUT PERMISSION



T: 020 7751 8898

361 Fulham Palace Road, London, SW6 6TA

E: parsonsgreen.residential.lettings@carterjonas.co.uk



Exclusive UK affiliate of

CHRISTIE'S
INTERNATIONAL REAL ESTATE

Classification L2 - Business Data

IMPORTANT INFORMATION

These particulars are for general information purposes only and do not represent an offer or contract or part of one. Carter Jonas or anyone in their employment has made every attempt to ensure that the particulars and other information provided are as accurate as possible and they are not intended to amount to advice on which you should rely as being factually accurate. Full information which may be relevant to your decision regarding the property can be found on the property listing on carterjonas.co.uk or a separately available material information sheet, and we would advise you to confirm the details of any material information prior to any offer being submitted. You should not assume that the property has all necessary planning, building regulations or other consents and Carter Jonas has not tested any services, facilities, or equipment. Any measurements and distances given are approximate only. Where Carter Jonas has been provided with a floorplan by a third party, we cannot guarantee that the floorplan has been measured in accordance with IPMS. Purchasers or prospective tenants must satisfy themselves of all of the aforementioned by independent inspection or otherwise. Our images only represent part of the property as it appeared at the time they were taken and do not represent the furnishings included; these are confirmed in a separate inventory. If you require further information, please contact us. *Administration fees may apply depending on tenancy type. Please contact your local branch for this information.