



ALTENBURG AVENUE, LONDON, W13
£2,650 per month*

Carter Jonas

ALTENBURG AVENUE, LONDON, W13

THE PROPERTY

The house is set over two floors and boasts modern interiors and a spacious garden. The kitchen comes with a dishwasher, a washing machine, a gas hob and a large free standing fridge freezer. There is a separate dining room and a separate lounge area.

The first floor comprises of two spacious bedrooms and a bathroom.

The property has a large garden with side access.

Conveniently situated in this desirable and certainly one of Northfields' most popular roads, just moments from Northfield Avenue's many shops, restaurants, park & Piccadilly Line tube station and falls within the well-regarded Fielding School catchment.

Holding deposit: 1 week's rent

Security deposit: 5 weeks' rent

Council tax: Band E

Minimum term: 12 months

Parking: on street via a permit

Pets: considered

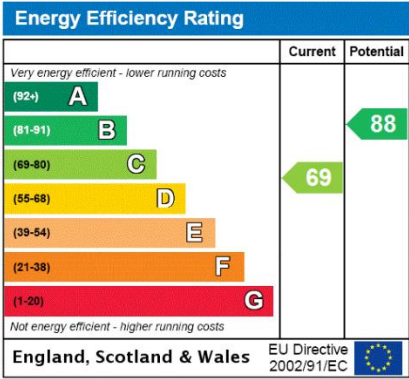
A newly renovated two-bedroom Victorian house with a large private garden.

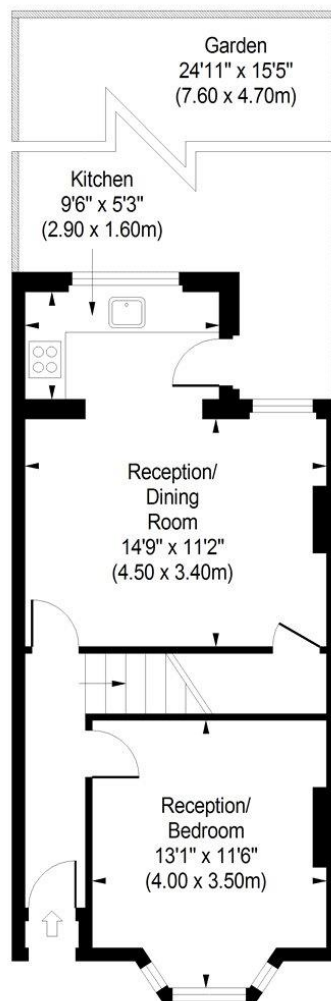


- Newly renovated
- Two-bedroom house
- Large private garden
- 836 square feet
- Unfurnished
- Residents parking

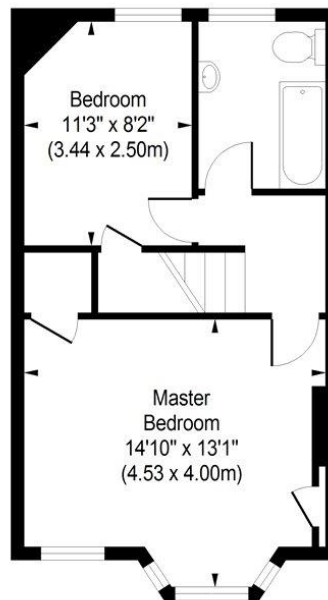
ADDITIONAL INFORMATION

Offers	Available for a minimum term of 12 months longer terms will be considered
Viewing	Strictly by appointment
Local Authority	Ealing Council - Council Tax Band E
EPC Rating	C





Ground Floor



First Floor

Altenberg Avenue
Approximate Gross Internal Area
836 sq ft / 77.66 sq m



ILLUSTRATION FOR IDENTIFICATION PURPOSES ONLY

ALL MEASUREMENTS ARE MAXIMUM, AND INCLUDE WINDOW BAYS AND WARDROBES WHERE APPLICABLE
THIS PLAN MUST NOT BE REPRODUCED BY ANY OTHER PERSON WITHOUT PERMISSION



T: 020 7751 8898

361 Fulham Palace Road, London, SW6 6TA

E: parsonsgreen.residential.lettings@carterjonas.co.uk



Exclusive UK affiliate of

CHRISTIE'S
INTERNATIONAL REAL ESTATE

Classification L2 - Business Data

IMPORTANT INFORMATION

These particulars are for general information purposes only and do not represent an offer or contract or part of one. Carter Jonas or anyone in their employment has made every attempt to ensure that the particulars and other information provided are as accurate as possible and they are not intended to amount to advice on which you should rely as being factually accurate. Full information which may be relevant to your decision regarding the property can be found on the property listing on carterjonas.co.uk or a separately available material information sheet, and we would advise you to confirm the details of any material information prior to any offer being submitted. You should not assume that the property has all necessary planning, building regulations or other consents and Carter Jonas has not tested any services, facilities, or equipment. Any measurements and distances given are approximate only. Where Carter Jonas has been provided with a floorplan by a third party, we cannot guarantee that the floorplan has been measured in accordance with IPMS. Purchasers or prospective tenants must satisfy themselves of all of the aforementioned by independent inspection or otherwise. Our images only represent part of the property as it appeared at the time they were taken and do not represent the furnishings included; these are confirmed in a separate inventory. If you require further information, please contact us. *Administration fees may apply depending on tenancy type. Please contact your local branch for this information.