



BEEHCROFT ROAD, WANDSWORTH, SW17

Carter Jonas

BEEHCROFT ROAD, WANDSWORTH, SW17

This joyful Victorian end of terrace, close to Wandsworth Common and Northern Line has been brilliantly overhauled by its owners to give c. 1,268 sq ft of stylish open plan living space with private garden.

The elegant double reception room is spacious, with large bay window, wooden shutters and two beautiful original fireplaces. The space is painted in a rich blue, complemented by Crittal-style double doors to the hallway and hard wood flooring throughout the ground floor.

The space flows through to the beautifully bright kitchen, which has been extended with a pitched ceiling to maximise space and light. A large window and glazed Crittal-style doors frame the view of the terrace and garden. Pale cabinetry, with brass accents, quartz worktops and splashback, provide plenty of counter space, and are paired with integrated appliances. The low maintenance garden has a large outdoor seating and barbeque area, perfect for summer entertaining. There is a guest cloakroom/W.C. on the ground floor.

On the first floor, two well-proportioned double bedrooms, one with built-in cupboards and bookshelves and a further bedroom and a family bathroom complete the accommodation on this level. A stylish and spacious bathroom, with freestanding tub and a separate shower can be found on the half landing. On the top floor, an elegant double bedroom in blush tones, benefits from a Juliet balcony with views of the garden.

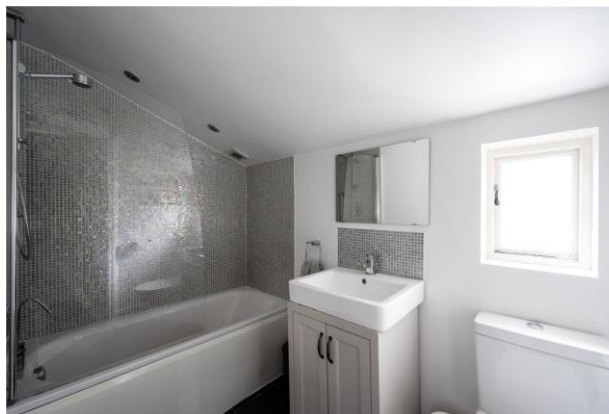
Beechcroft Road runs between Burntwood Lane and Upper Tooting Road. The house is within 0.6 miles of Bellevue Road, with its popular independent shops, cafés and restaurants and 0.7 miles from Wandsworth Common station, connecting to Victoria and 0.5 miles from Tooting Bec Underground (Northern Line).

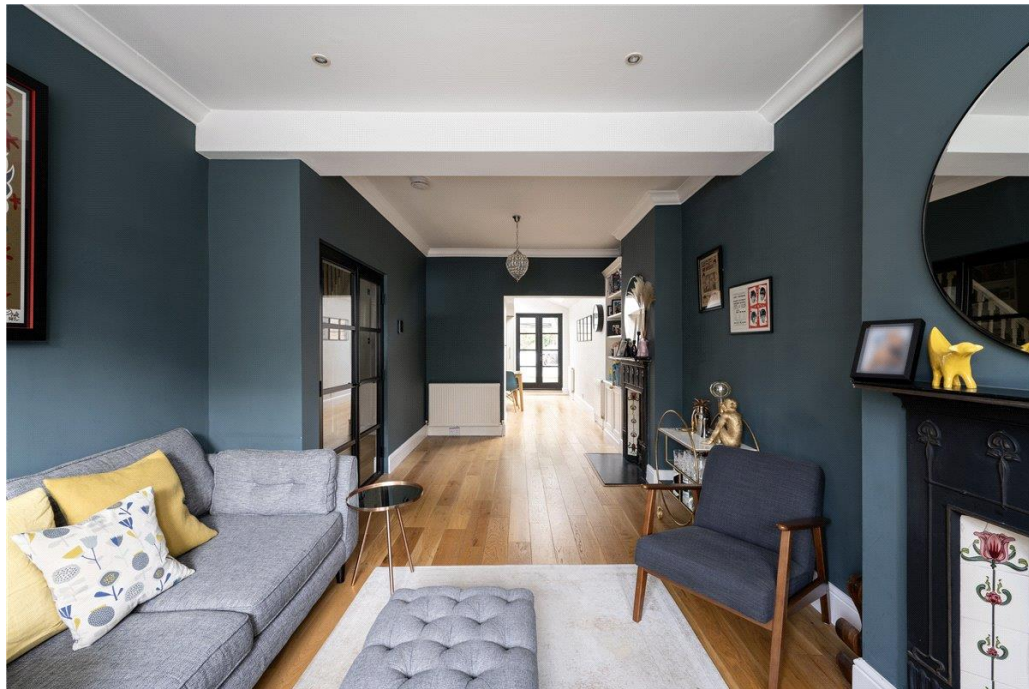
*NB Please note these photographs were taken in 2023. Some decor is no longer accurate to the property.

TENURE Freehold

LOCAL AUTHORITY London Borough of Wandsworth

EPC BAND D



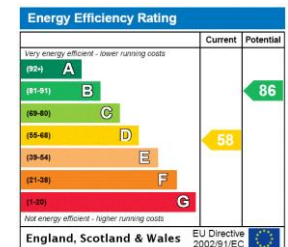






BEECHCROFT ROAD, SW17
 Approx. gross internal area 1268 Sq Ft. / 117.8 Sq M.
 Approx. gross internal area 1391 Sq Ft. / 129.2 Sq M. Inc. Restricted Height

All measurements are approximate and for illustration purposes only, as defined by the RICS Code of Measuring Practice © 2014
 Drawing Jones Design www.drawingjones.com 020 7050 9933



Wandsworth Sales 020 8767 7711

wandsworth@carterjonas.co.uk
 19 Bellevue Road, London, SW17 7EG

carterjonas.co.uk
 Offices throughout the UK

Exclusive UK affiliate of

CHRISTIE'S
 INTERNATIONAL REAL ESTATE

IMPORTANT INFORMATION

These particulars are for general information purposes only and do not represent an offer of contract or part of one. Carter Jonas has made every attempt to ensure that the particulars and other information provided are as accurate as possible and are not intended to amount to advice on which you should rely as being factually accurate. You should not assume that the property has all necessary planning, building regulations or other consents and Carter Jonas have not tested any services, facilities or equipment. Any measurements and distances given are approximate only. Purchasers must satisfy themselves of all of the aforementioned by independent inspection or otherwise. Although we make reasonable efforts to update our information, neither Carter Jonas LLP nor anyone in its employment or acting on its behalf makes any representations warranties or guarantees, whether express or implied, in relation to the property, or that the content in these particulars is accurate, complete or up to date. Our images only represent part of the property as it appeared at the time they were taken. If you require further information please contact us.

Classification L2 - Business Data