



HILLVIEW, CORNBOROUGH ROAD
£650,000

Carter Jonas

HILLVIEW, CORNBOROUGH ROAD, YO60 6QJ

Hill View House and Hill View Cottage present a rare opportunity to own a multi-generational property in a sought-after village. Nestled at the edge of the village, these homes offer breathtaking views of Sheriff Hutton Castle and the surrounding countryside.

The main house, built in 1984, features four bedrooms, including a principal suite with an en-suite bathroom, and two reception rooms that open onto a private, south-facing garden. The kitchen/breakfast room is a blend of modern convenience and country charm, complete with granite worktops, integrated appliances, and ample natural light.

The detached cottage, constructed in 2018, is a self-contained haven ideal for guests or as a holiday let. Spanning 700 square feet over two floors, it includes a spacious bedroom with an en-suite bathroom and a balcony offering far-reaching views. The cottage's kitchen/breakfast room is fully equipped and opens onto the garden, making it perfect for family and friends. Both properties benefit from an in-and-out block paved driveway, providing generous parking and easy access.

The village of Sheriff Hutton is rich in history and amenities. Dominated by the ruins of a 14th-century castle, the village also boasts a Norman church, a primary school, a post office, a general store, a garage, and a public house. Its location is ideal, situated midway between York, Malton, and Easingwold, with easy access to the A64, North York Moors, and the Yorkshire coast. The vibrant community and picturesque setting make it a desirable place to live.

Hill View House and Hill View Cottage are more than just homes; they are a lifestyle. With their unique blend of historical charm and modern amenities, they offer a perfect balance of comfort and convenience. Whether you are looking for a family home, a place to entertain guests, or a property with potential for holiday letting, these homes provide endless possibilities. Contact us today to arrange a viewing and experience the charm and elegance of Hill View House and Hill View Cottage for yourself.

TENURE Freehold

LOCAL AUTHORITY North Yorkshire Council

EPC BAND To be confirmed

A UNIQUE MULTI-GENERATIONAL PROPERTY WITH STUNNING VIEWS, MODERN AMENITIES, AND A SELF-CONTAINED COTTAGE, LOCATED IN A VIBRANT VILLAGE NEAR YORK.



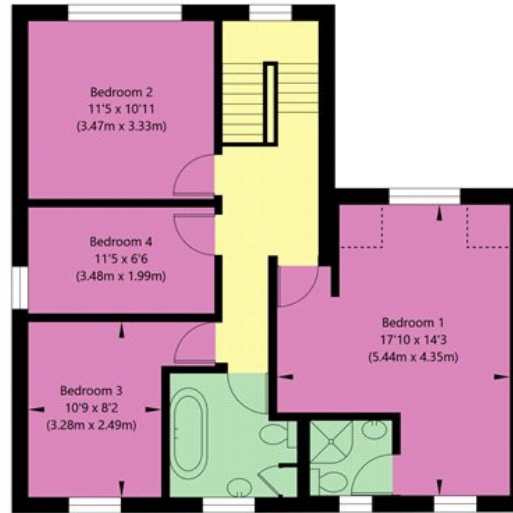




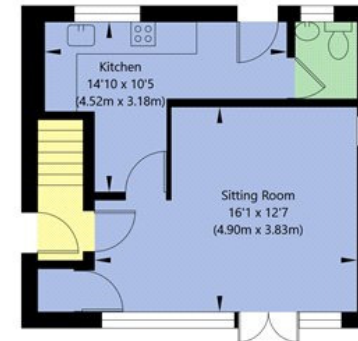
Hill View, Cornborough Road, York, YO60 6QJ



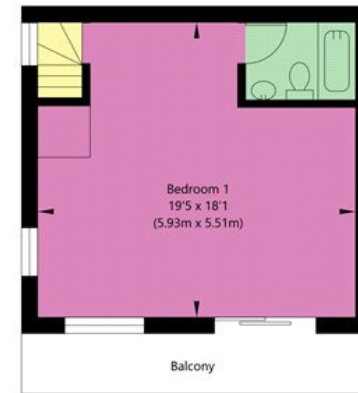
Ground Floor
GROSS INTERNAL FLOOR AREA
APPROX. 783 SQ FT / 72.74 SQ M



First Floor
GROSS INTERNAL FLOOR AREA
APPROX. 728 SQ FT / 67.65 SQ M



Cottage Ground Floor
GROSS INTERNAL FLOOR AREA
APPROX. 345 SQ FT / 32.07 SQ M



Cottage First Floor
GROSS INTERNAL FLOOR AREA
APPROX. 352 SQ FT / 32.67 SQ M



NOT TO SCALE - FOR ILLUSTRATIVE PURPOSES ONLY
APPROXIMATE GROSS INTERNAL FLOOR AREA 2208 SQ FT / 205.13 SQ M
All Measurements and fixtures including doors and windows are approximate and should be independently verified.
www.exposurepropertymarketing.com © 2024

York 01904 558200

york@carterjonas.co.uk
82 Micklegate, York, YO1 6LF

carterjonas.co.uk
Offices throughout the UK

IMPORTANT INFORMATION

These particulars are for general information purposes only and do not represent an offer of contract or part of one. Carter Jonas has made every attempt to ensure that the particulars and other information provided are as accurate as possible and are not intended to amount to advice on which you should rely as being factually accurate. You should not assume that the property has all necessary planning, building regulations or other consents and Carter Jonas have not tested any services, facilities or equipment. Any measurements and distances given are approximate only. Purchasers must satisfy themselves of all of the aforementioned by independent inspection or otherwise. Although we make reasonable efforts to update our information, neither Carter Jonas LLP nor anyone in its employment or acting on its behalf makes any representations warranties or guarantees, whether express or implied, in relation to the property, or that the content in these particulars is accurate, complete or up to date. Our images only represent part of the property as it appeared at the time they were taken. If you require further information please contact us.

Classification L2 - Business Data